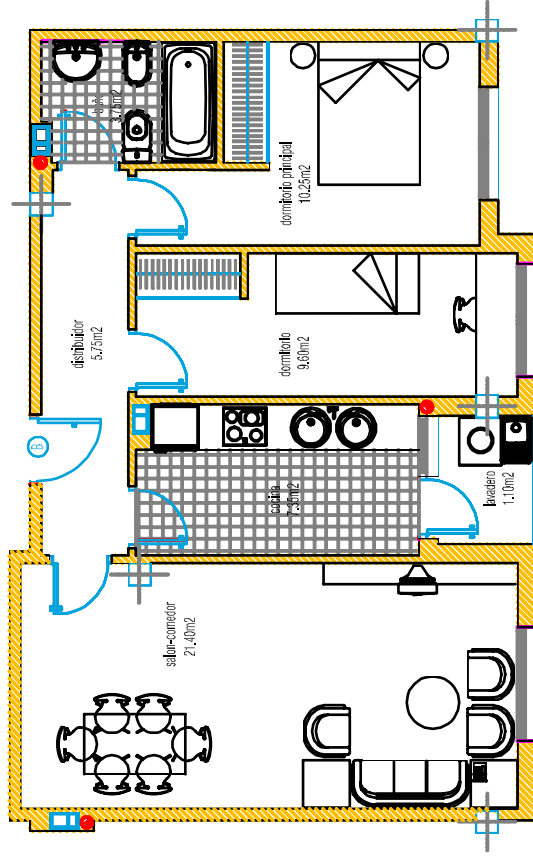
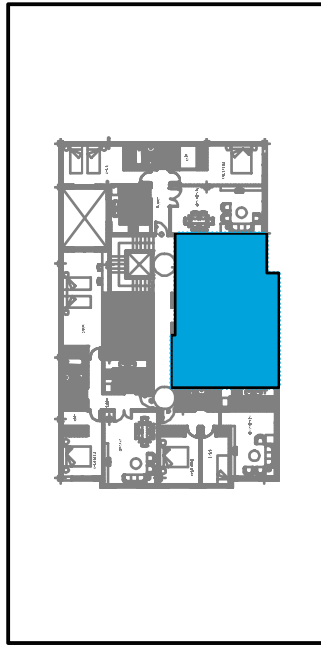
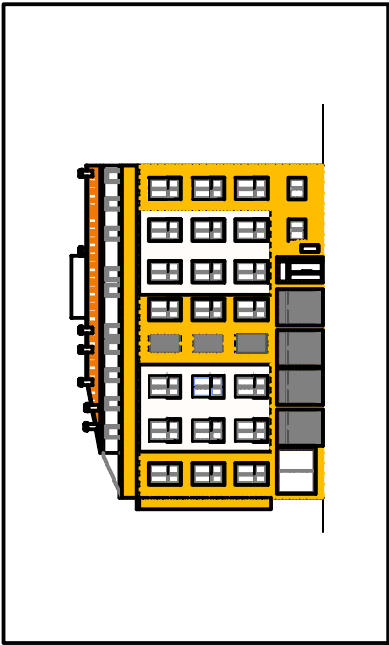


Edificio 13 Viviendas Molina de Segura_Murcia VIVIENDA B



VIVIENDA B

PLANTA TERCERA	
RETRIBUCION	5.75m ²
BAÑO 1	3.75m ²
DORMITORIO PRINCIPAL	10.25m ²
SALON COMEDOR	21.40m ²
DORMITORIO 1	9.60m ²
COCINA	7.35m ²
LAVADERO (BPA)	1.10m ²
TOTAL SUP. UTIL	59.20m ²
TOTAL SUP. CONSTRUIDA	77.27m ²

planta TERCERA